

International Ceramics Festival **Gŵyl Rhyngwladol Serameg**



Friday 3 - Sunday 5 July 2009
Aberystwyth Arts Centre, Wales



Organised by Aberystwyth Arts Centre, North Wales Potters and South Wales Potters

Contents

- 1 Welcome**
- 2 Activities**
- 3 Exhibitions**
- 4 Awards and Special Events**
- 5 Trade Stands**
- 6 Lectures**
- 7 Films**
- 8 Aberystwyth Arts Centre**
- 8 North Wales Potters**
- 8 South Wales Potters**
- 11 Catering and General Information**
- 12 Handy Planner**
- 14 Floor Plans**
- 15 Master of Ceremonies**
- 16 Demonstrators and Guest Artists**

Officials, Committee and Assistants

For North Wales Potters: Pea Restall and Audrey Richardson

For South Wales Potters: Jeff Taylor

For Aberystwyth Arts Centre: Alan Hewson, Eve Ropek, Cath Sherrell

For Aberystwyth University: Moira Vincentelli

Accommodation: Amanda Roberts

Festival Co-ordinator: Sophie Bennett 01970 622338 sob@aber.ac.uk

Site Co-ordinator: Pete Goodridge

Materials Organiser: Roger Guy Young

Cup Sale: Phil Rogers

Marketing: Louise Amery 01970 622889 lla@aber.ac.uk

With thanks to all **Aberystwyth Arts Centre** Staff, in particular: Rena Roberts and the Services Team; Nick Bache, Pete Lochery and the Technical team; Joan Rowlands, Jim West, Sarah Hughes, Matt Worthington and all the Cafe and Bar staff; all the Box Office and marketing team, the University Conference Office and everyone else who has helped to make the Festival a success.

The International Ceramics Festival would like to thank the following for their support for the 2009 Festival: Arts Council of Wales, Potclays Ltd, Studiopottery.co.uk, Top Pot Supplies, The Pottery Workshop in Jingdezhen, Valentines Clay, Gladstone Engineering, Scarva Pottery, Stedmark Ltd, Acme Batts Co, Calor Gas, Jewsons Ltd,

cover image Akira Yoshida at the 2007 Festival and other images used in this brochure from the 2007 festival by Glenn Edwards
Design Stephen Paul Dale



Valentine Clays



POTCLAYS
LIMITED



Gladstone Engineering



SCARVA
Pottery Supplies



Canolfan y Celfyddydau
Aberystwyth Arts Centre



Noddir gan
Lywodraeth Cymru
Sponsored by
Welsh Assembly Government



Welcome to the International Ceramics Festival

Croeso i'r Wyl Serameg Gyngwladol

Festival 2009

As ever, the 2009 Festival is host to an astonishing array of influential potters and ceramicists from all corners of the world.

We provide an unique opportunity for potters, young and old, professional and amateur, to meet and be informed and inspired by a wide range of styles and techniques demonstrated and explained.

Demonstrating on stage will be:

Daniel Allen demonstrating his work on a large scale hollow standing figure, built up with small sheets of flattened paperclay without the use of armatures.

Sandy Brown demonstrating her making and decorating techniques with characteristic exuberance and spirit.

Jack Doherty, Chair of the CPA and Lead Potter at the Leach Pottery in St. Ives, Cornwall, demonstrating both thrown and slab pieces in porcelain.

Edith Garcia, born in Mexico now living in the USA and the UK, will be demonstrating the methods by which she creates her sculptures, concentrating on slab building a head.

Jean Nicolas Gérard, master of terre vernissée or slipware, demonstrating how he creates his series of pots, both thrown and slab built, and also his decorating techniques.

Regina Heinz, taking inspiration from the mountainous landscapes of her home country of Austria, and demonstrating her own making methods which emphasise the softness and tactile qualities of clay.

Shozo Michikawa, one of Japan's leading ceramicists, whose works have been called haikus in clay, demonstrating his throwing techniques, particularly in making triangular and square forms.

Don Reitz, one of the most important and influential ceramicists working today; he has pursued a life-long investigation of both salt and wood firing, his forms full bodied and boldly marked and etched with knife marks.

Jeff Shapiro demonstrating his methods of slab construction using templates, working on large pieces including a five foot tall triangular bottle. He will also show how he makes thick platters from recycled clay, and hand carves tea bowls.

Zhao Hua Yang, Zhao Hua Long and Ning Fa You are from Jingdezhen, China, and will be demonstrating their traditional ceramics skills and techniques as they throw and decorate big ware.

Kilns will be ablaze from Friday night, so don't miss:

Peter Hayes, demonstrating how to build a high quality affordable raku kiln.

Nina Hole, a Danish artist who builds enormous clay sculptures which act as their own kiln. She will be building a 2 metre high sculpture, ready for firing.

Tom Barnett will be building a multi media project called (fire) capsule - an artwork 'conceived to overload the senses', with the firing of a hollow clay form at its centre.

Masakazu Kusakabe from Japan will be demonstrating the making and firing of his 'smokeless kiln' as well as demonstrating tea bowl making in the demonstrators' area throughout the weekend.

In our marquees are:

- workspaces of some of the demonstrators
- commercial stands selling ceramic materials and equipment
- details and advice concerning academic courses
- books, magazines and other material for sale

We wish everyone a very fantastic Festival weekend!

The International Ceramics Festival Committee





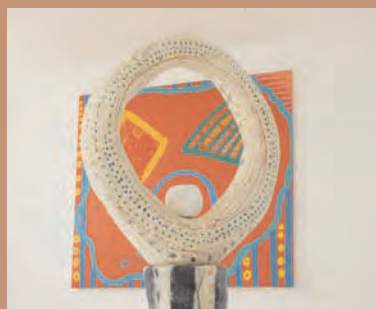
Activities 2009

Opening Ceremony

The Festival will be opened on Friday evening by the Honorary President and great supporter of the Festival, Henry Sandon, who is a familiar face on the Antiques Roadshow and a collector of ceramics. The Ceremony is an opportunity to see all the visiting ceramicists and potters give a brief introduction to their work and their plans for the Festival weekend. Plus it's a great evening for reuniting friends from past Festivals and a chance to make new friends and contacts for the Festival weekend.

Sandy Brown: the Still Point & the Dance Tea Ceremony

This exhibition, which is on show in Gallery 1, includes a contemporary tea ceremony room designed by Sandy, who also made all the utensils. Here, she will perform the tea ceremony ritual as a form of meditation. There will be two ceremonies during the weekend, at 2.45pm on Saturday and 1.15pm on Sunday. Only three people can take part in each one, so in order to enter in the draw for one of these places please fill in the form in your pack and hand it in to Reception before 11.30 a.m. on Saturday. Jim Robison will draw the winners at 12 noon.



Aberystwyth Arts Centre: Ceramics Residency

Aberystwyth Arts Centre is running an Artists' Residency programme, with three artists currently based in the Creative Units (the new crinkly buildings!). One is a Ceramic artist, Evelyn Grant (see page 6 for details of her lecture) and all three artists will have an Open Studio time during the festival - information on times available at the reception desk.

Hands On Activity with Peter Hayes

Peter Hayes will be firing his raku kiln at the Festival to make an 8ft archaeological sculpture, after raku firing the sculpture the shards will be glued together and the construction will be built up over the Festival. Members of the public are invited to contribute to this by creating the clay pieces and once fired adding these to the sculpture. This will be an ongoing process throughout the Festival weekend.

2009 Festival Photographer: Photojournalist Glenn Edwards

Glenn studied Documentary Photography at University of Wales College Newport under the tuition of Magnum photographer David Hurn and has worked regularly for national papers such as The Independent, The Times, The Western Mail, before becoming Picture Editor for Wales on Sunday. In 1998 he was awarded the UK News Photographer of the Year title with his portfolio including pictures from the funeral of Princess Diana.



Exhibitions 2009

Demonstrators' Exhibition Studio

A wonderful chance to see and purchase works by the potters and ceramicists taking part in the Festival - available only at the weekend.

The exhibition is open at the following times:

■ Saturday 9am-5pm ■ Sunday 10am-4pm

North Wales Potters' and South Wales Potters' Exhibition Chapel

A selling exhibition of work by members of North Wales Potters and South Wales Potters associations.

The exhibition is open at the following times:

■ Saturday 10am-8pm ■ Sunday 9am-4pm

Festival Cup Sale Main Foyer

All demonstrators and visitors to the Festival are invited to bring a cup to donate to the Festival and be part of the 'cup sale' exhibition. All cups will be on display in the foyer from the start of the Festival on Friday evening, opening for sale on the Sunday morning from 10.00 am. Please support this exhibition - the revenue helps to keep the cost of tickets as low as possible for future Festivals.

Sandy Brown: The Still Point and the Dance Gallery 1

Sandy Brown has been called 'one of the great individualists of British ceramics'. This large scale ceramic installation is the most ambitious project she has yet undertaken, originally inspired by T.S. Eliot's poem 'Burnt Norton' (from 'Four Quartets').

Supported by Arts Council of England



Subterranean Architecture, Stepwells in Western India Gallery 2

Photography by Richard Cox. Artist Richard Cox

has been a regular visitor to Western India, but his last three visits were to document Stepwells, a little known aspect of traditional architecture.



Barrett-Danes: A Continuing tradition: Ceramic work by Alan, Ruth and Jonathan Barrett-Danes Ceramics Gallery

For the Barrett-Danes ceramics has been a tradition spanning six generations dating back to the nineteenth century. The exhibition starts with examples of Upchurch Pottery from the early 20th century and charts the work of Alan and Ruth and their son, Jonathan from the 1950s to the present. Working jointly and individually the work of Alan and Ruth Barrett-Danes represents a unique contribution to studio ceramics. Alan's experimental approach, Ruth's strange creatures and Jonathan's characterful animals intrigue and delight.

At 1 pm on Saturday 4th July Ruth Barrett-Danes will offer an informal tour and question and answer session in the gallery - all welcome.

Perspectives of Buildings Cafe Gallery

Photographs by John Cable.

Craft & Design Shop

The Craft & Design Shop always displays and sells a selection of ceramics by contemporary makers. Featured during the Festival will be work from Welsh potters, from a selection of established and emerging makers.



Serge Sanghera
Student Award Winner 2009

Awards and Special Events

Lifetime Achievement Award

The Festival makes a Lifetime Achievement Award to recognise a ceramic artist or potter who has made a major contribution to the world of ceramics. The 2007 Lifetime Achievement Award was given to Ruth Duckworth, one of the world's foremost ceramic artists, and on Friday evening we will be announcing the winner of the 2009 Award. During the weekend we will be giving all delegates the opportunity to nominate a potter for the 2011 Lifetime Achievement Award. Please complete the form enclosed in your Festival pack and post it in the box at the Front Desk.

Student Award

The Student Award gives a student or recent graduate (or a group) the opportunity to present a project or a firing at the Festival, and work alongside some of the world's most respected artists. This year's winner is Serge Sanghera, recently graduated from Wolverhampton. He makes large scale wheel thrown vessels, and combines his skill in throwing with his training in two Japanese martial arts; while the leather-hard thrown piece rotates on the wheel, he strikes with a sword using martial arts

The Student award winners will be presented with a special ceramic piece made by Ashraf Hannah, donated by Studio Pottery, at the opening ceremony.



Sponsored by Studiopottery.co.uk

The Mongol Rally 2009: Team 'Round the World in 80 Clays'

Potters (and Festival Staff!) Alasdair Bremmer (aka Jules Burn) & David Binns (aka Phileas Grog) will be embarking on a 10,000 mile overland journey from the UK to Mongolia, as part of the Mongol Rally in aid of the Mongolian Childrens Charity Mercy Corps, Medecins Sans Frontieres, The Tartan Army Children's Charity and the Harris Bursary. Alasdair and David will be taking a potters wheel on the roof of their car and intend to make pots en-route - throwing on the roof of the car! The car will be here during the Festival weekend- which takes place just two weeks before they set off. For more information about the rally please visit their website www.80clays.com

Souvenir Bowl

Potter Joe Finch is making a special edition bowl for the Festival which will be fired on site during the Festival. Bowls can be ordered at the Front Desk by pre-payment of £13.50 each, and will be available for collection on Sunday afternoon.

Festival Raffle

Many demonstrators have donated a piece of work to the raffle. This is your opportunity to take a piece of the Festival home. Tickets will be on sale throughout Saturday and on Sunday morning from the Front Desk. The raffle will be drawn on Sunday afternoon at 12pm in the Great Hall.

An unique opportunity to see and compare equipment, tools, materials and books as well as being able to purchase tried and tested products.

The following companies are represented in the trading areas on the Chapel Court

Trade Stands

Ceramics Ireland
Studio 10, Downs Ind Est,
Delgany, Co Wicklow,
Ireland.
Tel: 00353 85 7190912
Email: byrmetina@hotmail.com

Fireworks Clay Studios
24 Tudor Lane, Riverside,
Cardiff. CF11 6AZ
Tel: 02920 397195

University of
Wolverhampton
Molineux St, Wolverhampton.
WV11 SB
Tel: 01902 321953
Website: www.wlv.ac.uk

University of the Arts,
Camberwell College
Peckham Rd, London.
SE5 8UF
Tel: 020 7514 6338

Discus Potters Wheels
DKL Development Ltd,
34 St James Chambers, St
James Street, Derby. DE1 1QZ
Tel: 01332 371635
Email:
les@discuspotterswheels.com

Valentine Clays Ltd
The Sliphouse,
18-20 Chell Street, Hanley,
Stoke-on-Trent. ST1 6BA
Tel: 01782 271200
Fax: 01782 280008
Email:
sales@valentineclays.co.uk
Website:
www.valentineclays.co.uk

Gladstone Engineering
Foxley Lane, Milton,
Stoke on Trent. ST2 7EH
Tel: 01782 536615
Fax: 01782 533415
Email: info@pugmills.com

Jingdezhen Sanbao
Ceramic Art Institute
Jingdezhen, PO BOX 1000,
PR of China 333001
Tel: 86 0 798 848 3665
Fax: 86 0 798 8496513
Email: wenyng2002@hotmail.com

EWha Womans University
Department of Ceramic Art
Suhdaemun-gu, Daehyun-Dong,
11-1 Seoul, Republic of Korea.
120 - 750
Tel: 822 475 6862
Fax: 822 488 4854
Email: gorgornia@hotmail.com

PotteryCrafts Ltd
Campbell Rd, Stoke On Trent,
Staffordshire. ST4 4ET
Tel: 01782 745 000
Email:
enquiries@potteryCrafts.co.uk

Potclays Ltd
Brickkiln Lane, Etruria,
Stoke on Trent ST4 7BP
Tel: 01782 219 816
Fax: 01782 286 506
Email: sales@potclays.co.uk
Website: www.potclays.co.uk

Bath Potters Supplies
Unit 18, Fourth Avenue,
Radstock, Bath. BA3 4XE
Tel: 01761 411 099
Fax: 01761 414 115
Email: sales@bathpotters.co.uk

Ceramic Review
25 Foubert's Place, London.
W1F 7QF
Tel: 020 7439 3377

Neue Keramik
Steinreuschweg 2, 56203
Hoehr-Grenzhausen, Germany.
Tel: 49 2624 948068
Email: info@neue-keramik.de

Ceramics: Art and
Perception
23 North Scott St, Sheridan,
Wyoming. 82801 US
Tel: 001 307 675 1056
Email: 1ceramicart@gmail.com

Castree Kilns
Quarry Farm, Llanboidy,
Whitland. SA34 0EX
Tel: 01994 241589
Email:
James@castreekilns.co.uk

Top Pot Supplies
Celadon House, 8 Plough Lane,
Newport, Shropshire. TF10 8BS
Tel: 01952 813 203
Fax: 01952 810 703
Email: robin@toppot.co.uk
Website:
www.toppotsupplies.co.uk

Contemporary Ceramics
7 Marshall St, London. W1F 7EH
Tel: 020 7437 7605
Email:
contemporary.ceramics@virgin.net

Le Perdrix Ceramic
Centre,
Dordogne La Perdrix, 4 Rue des
Anciens Combattant, St Martin
de Riberac, Dordogne,
24600 France.
Tel: 00 33 (0)553 912477
Tel: 00 44 (0)2920 215039
E-mail: arrowbark@hotmail.com
Website: www.laperdrix.co.uk

UWIC
Howard Gardens Campus,
Howard Gardens, Cardiff.
CF24 0SP
Tel: 02920 416343
Email: csad@uwic.ac.uk
Website: www.csad.uwic.ac.uk

West Herts College
Watford Campus, Hempstead Rd
Watford, Herts.
WD17 3EZ Tel: 01923 812000
Email:
admissions@westherts.ac.uk
Website: www.westherts.ac.uk

Coleg Sir Gâr
Jobs Well Rd, Johnstown
Carmarthen, Dyfed.
S Wales SA31 3HY
Tel: 01554 748 157
Email:
Admissions@colegsirgar.ac.uk
Website: www.colegsirgar.ac.uk

In the Main Foyer:

Adopt a Potter Scheme
C/O Maze Hill Pottery
The Old Ticket Office,
Woodland Park Rd,
Greenwich, London.
SE10 9XE
Tel: 020 8293 0048
Email:
mazehill.pottery@virgin.net
Website:
www.adoptapotter.org.uk

The Log Book
PO Box 612, Scariff
Co Clare, Ireland
Tel: 00353 61922918
Email: thelogbook@eircom.net



Lectures 2009

Invited lecturers and many of our 'star attractions' guests will be talking about ceramic techniques, their work and influences throughout the weekend, interspersed with selected films on ceramics.

Lectures and films will take place in the theatre on the upper floor or in the cinema on the middle floor.

The full lecture/seminar programme is given in the Handy Planner (centre pages), and includes talks by or on behalf of the demonstrators as well as the following:

Aberystwyth Arts Centre Ceramics Residency: Evelyn Grant

Evelyn is from Alberta, Canada and will be talking about her work and career in the arts, including her studio work, and day job as a ceramic programmer, and later a public art project manager. She will discuss the changes in her studio work and aesthetic sense as a direct result of the MA ceramic design course she is currently enrolled in.

Mick Casson Memorial Lecture:

A special lecture in memory of the Festival's former Honorary President, Mick Casson, was introduced at the 2005 Festival. This year the lecture will be by Don Reitz and is entitled 'The Great Journey'.

Discussion Forum on Fu Le International Ceramic Art Museums (FLICAM), China

Glasgow ceramicist, Wendy Kershaw will lead a panel discussion about the innovative concept of the 'instant' international museums complex being developed at the Pottery Art Village at Fuping in China. Groups of artists from a selected country are invited over a period of weeks to make work for the museum using the facilities and technical support of the brick factory at Fuping. She will be joined by others who were part of the group from the UK in 2008 including Sandy Brown, Regina Heinz and Ingrid Murphy.

Caroline Cheng "China China"

Caroline Cheng is the leader of The Pottery Workshop in Jingdezhen. She will give a presentation of her work, the potters of Jingdezhen and the changing ceramic culture of her country.

Hyeyoung Cho "Transitions in Contemporary Korean Ceramics"

Hyeyoung Cho is a university lecture at EWHA Womens University in Seoul, Korea. Her talk will concentrate on the contemporary Korean ceramic development, influences from the past and how it has evolved today.

The Log Book International Woodfired Ceramics - A Personal Perspective

As editors/publishers of "The Log Book - International Woodfired Ceramics", Robert Sanderson and Coll Minogue are uniquely placed to give an overview of International Woodfired Ceramics. This year marks ten years since Robert and Coll first built a woodfired train kiln at the Festival.

Henry Sandon

The Festival's President presents an insight into his life as a self proclaimed 'pot-a-holic!' Made an MBE for his services to the ceramics industry, he was for 17 years Curator of Royal Worcester at the Dyson Perrins Museum, as well as a resident expert on the BBC Antiques Roadshow.

Timothy Wilson

Timothy Wilson is one of the world's foremost authorities on maiolica. This lecture will focus on the first treatise on pottery making published in Europe, 'The Three Books of the Potter's Art', 1556, by Cipriano Piccolpasso. Much of what we know today about the methods and about the important maiolica artists of the Renaissance period is taken from information in Piccolpasso's books which are housed today in the Victoria and Albert Museum in London.



Films 2009

Vicky Eden "Cockle Pickers" -

On the night of February 5th 2004, 23 migrant workers from China drowned as they gathered cockles from the sands of Morecombe Bay. This film shows how local ceramic artist Vicky Eden responded to this tragic event by creating an installation to commemorate those who lost their lives.

David Cushway - "Teapot" & "Jug"

The two films shown here are part of 'Fragments', 2006-7. Working in collaboration with the University of Wales Engineering Department, Cushway used ultra high-speed cameras shooting at 3000 frames per second; at this speed he was able to film a teapot, cup etc at the moment of breaking. The film was then slowed and reversed 'so that the objects break and then reform themselves'.

Pottery and Dragon Kiln Village "TaoYao"

(2008 UNESCO Clay Art Winner)

This documentary looks at pottery making in the village of Tao Yao, located eighty kilometres north of Yellow Mountain. In this village pottery making can be dated back to the Tang dynasty (ninth century AD). This group of potters is the last generation left working and living within the old tradition.

Simon Carroll "Bedruthen Steps"

"I didn't know what else to do, what do you do on a beach all day? Read a book? take a nap? ...I saw some kids writing their names in the sand, so I took that a step further... and brought my love of painting to the beach..." This short film is shown in celebration of potter Simon Carroll's life, cut short untimely by cancer this year.

"Pottery of the ethnic minorities of Southwest China"

This is the first documentary film recording the pottery technique of eight ethnic groups and communities living in Southwest China : Li, Tibetan, Yi, Dai, Bai, Miao, Shui and Chuanqing people. The film is arranged and structured based on the history and development of ceramics displaying a complete and detailed panorama of the pottery handicraft of the ethnic minorities in Southwest China. Not only is this a documentary studying, preserving and promoting Chinese ethnic cultures, it also helps the outside world to understand the diversity of colourful Chinese ethnic cultures through the window of ancient pottery making.

School of
Art&Design

love what you do, do what you love

Study BA, MA and PhD level ceramics at Wolverhampton University with the guidance of passionate, world renowned, ceramic artists as your tutors; Gwen Heeney, David Jones and Vicky Shaw.

One of our main specialities is architectural ceramics and the course is committed to its collaborative links with the architectural ceramic industry, especially the brick industry. Students have the benefit of working large scale on live projects and at the core of this ceramics course is its professional practice and portfolio modules. Embedded in our philosophy is important post degree involvement on a number of major public art projects such as Youth Space with our students. You will also have the opportunity to take advantage of exchange projects with Alfred University in the USA and the Baden Württemberg Scholarship Programme in Germany.

Contact admissions:
t: 01902 322058
e: art-design@wlv.ac.uk

For further course info
contact Gwen Heeney
t: 01902 321958
e: G.Heeney@wlv.ac.uk

 UNIVERSITY OF
WOLVERHAMPTON



DESIGN AND APPLIED ARTS
CERAMICS



Aberystwyth Arts Centre

Award winning Aberystwyth Arts Centre is truly a 'national flagship for the arts' (Western Mail) with facilities unrivalled throughout much of the UK. The Arts Centre welcomes over 650,000 visitors each year, with a full and busy programme of performances, cinema, exhibitions and special events and the most extensive community arts and education service in Wales.

Facilities within the venue include a concert hall, theatre, galleries, cinema, studio, and an array of purpose built workshop facilities including ceramics studio, photographic suite, recording studio, print studio, dance studios and the new Creative Units.

Aberystwyth Arts Centre has been a co-organiser, along with North & South Wales Potters, of the International Ceramics Festival since its early beginnings in 1987, and contemporary ceramics continues to play an important part in the venue's programming. www.aber.ac.uk/artscentre



North Wales Potters and South Wales Potters



Terry Bell-Hughes

North Wales Potters

North Wales Potters Association brings together people from all walks of life who have an interest in clay, be they professional potters, amateurs, students, teachers or collectors. Our aim is to educate and stimulate by the exchange of techniques, ideas and philosophy whilst providing marketing and publicity opportunities for our membership with our exhibition programme.

We have a full year of events, which include demonstrations and slide shows by guest potters. In intimate and informal surroundings we meet internationally renowned potters who share their techniques with us. Over shared food and shared activity we all get to know each other better and learn new skills to implement our working practice.

Claywork, our quarterly magazine circulated to all membership, features articles, news, events, information, reviews and photos and is written for the membership by the membership.

If you would like to learn more about us please visit our website www.northwalespotters.co.uk or contact our secretary Mary Matthews 01766 522654 maryornament@tydrysanderw.wanadoo.co.uk

South Wales Potters

South Wales Potters, the first regional potters' group in Britain, was founded in 1964. The association welcomes all who have an interest in pottery, whether professional, student or hobby potter. It continues to promote its core aims of developing the skills and understanding of its members, promoting an appreciation and awareness of ceramics among the public and providing opportunities for the marketing of members' work. The regular demonstrations, lectures and social events provide opportunities for inspirational work with clay and a chance for potters to meet and exchange ideas and benefit from mutual support.

Members are kept up to date with forthcoming events and exhibitions through the newsletter, Shards, and the SWP website, which also provides platforms for news, opinions and technical developments in pottery.

A visit to the society's website, www.southwalespotters.org.uk will give you a flavour of the organisation together with details of how to become a member, or you can email us with any enquiry at email@southwalespotters.org.uk.



Andrew Niblett

Valentine Clays Ltd

Manufactured in the Heart of the Potteries...



raw perfection

the choice of the professional potter

Visit our stand at the show
to see our full range of clays

t: 01782 271200 f: 01782 280008

The Sliphouse, 18-20 Chell Street, Hanley, Stoke on Trent, ST1 6BA
Email: sales@valentineclays.co.uk • Web: www.valentineclays.co.uk

The 15th ART IN CLAY

HATFIELD HOUSE, HATFIELD, HERTS
7TH 8TH 9TH AUGUST 2009

10 AM - 5.30 PM FRIDAY, SATURDAY
10 AM - 5.00 PM SUNDAY

SPECIAL OFFER
ADMITS TWO FOR
THE PRICE OF ONE
SAT 8TH & SUN 9TH AUGUST
TELEPHONE OR EMAIL FOR DETAILS



NEW

PRE-BOOKING NUMBER
NO BOOKING FEE 0115-987-3966

VISIT
www.artinclay.co.uk

Art in Clay 9 Ivy Grove Carlton Nottingham NG4 1RG
Telephone: 0115 987 3966 Email: andymcinnis1@yahoo.co.uk





Catering and General Information 2009

Festival Catering

The Arts Centre's cafes will be open throughout the Festival from early in the morning to late at night offering meals from breakfast through to supper.

There are also licensed bars - in the main foyer and in the theatre foyer - where tea, coffee and snacks will also be available. Food and drinks can also be bought in the Marquee area.

Arts Centre Cafés

Main Café

Thursday 10am - 10pm

Friday 7:30am - 10pm

Saturday 7:30am - 6pm

Sunday 7:30am - 10pm

Monday 7:30am - 8pm

Piazza Café

Thursday 9am - 5pm

Friday 7:30am - 10pm

Saturday 7:30am-5pm

Sunday 7:30 - 4pm

Monday 9am - 5pm

Marquee Café

Friday 7:30pm - 9:30pm

Saturday 7:30am - 5pm

Sunday 7:30am - 5pm

Arts Centre Bars

Open till late on Thursday: From 12 noon; Friday: From 11am; Saturday From 11am; Sunday: From 11am; Monday: From 12 noon. There will be a selection of real ales on sale during the weekend.

Saturday Night Buffet

The Saturday evening buffet opens at 7.30pm, and will be served at various café outlets around the Arts Centre building. There will be plenty of food for all, so please be patient when queuing! Your Festival pass will act as your meal ticket so please make sure you bring this with you. Enjoy your meal anywhere on the Festival site. There will be live music in the bar upstairs from 8.30pm onwards.

Children's events

There will be children's arts and crafts workshops during Saturday and Sunday, and children's videos on Friday during the Opening Ceremony. However children must be registered in advance by contacting [Sophie Bennett](#)
Tel: 01970 622338 Email: sob@aber.ac.uk. These are workshop activities, not 'childcare'. Children remain the responsibility of their parents/guardians throughout the weekend. If you have a mobile phone, please bring it with you and give us your number so that, we can contact you during a workshop if necessary.

Reception

The Festival reception and accommodation desk are situated in the main foyer outside the Great Hall. Please register with reception on arrival to receive your Festival pack and Festival ticket. Reception staff will be able to assist you with ticket, programme and accommodation queries and help you locate lecture theatres and demonstration areas. Any changes to the Festival schedule will be posted on the reception notice board and announced in the Great Hall.

Reception Opening Times are:

Friday: 10am - 9pm Saturday 8.30am - 7.30pm Sunday 8.30am - 5.30pm



Programme of Events for the Weekend

Friday 3rd July

The Opening Ceremony starts at 7pm in the Great Hall

Chapel Court - Nina Hole building and firing her fire sculpture late into the evening. Tom Barnett: Kiln firing performance begins at dusk (approx 9:30pm). 24 hour performance.

Saturday 4th July

TIME	GREAT HALL	THEATRE	CINEMA	PIAZZA	CHAPEL COURT
9-10am	Jack Doherty & Edith Garcia	Jeff Shapiro: Romanticism VS Pragmatism: 'If It Looks Good, It Is Good'		Peter Hayes: Building and firing his Raku kiln.	Nina Hole: Kiln firing building up to a spectacular finish at 8:30pm approximately
10:30-11:30am	Don Reitz	Peter Hayes: 'Earth, Fire & Water'	Caroline Cheng 'China China'	Hands on project: With Peter Hayes.	Tom Barnett: Performance finale at 9:30pm approximately
12-1pm	Jeff Shapiro & Daniel Allen	Sandy Brown: 'The Still Point'	Potters of Southwest China Film	Masakazu Kusakabe: Firing smokeless kiln with souvenir bowls inside.	
1:30-2:30pm	Zhao Hua Yang, Zhao Hua Long and Ning Fa You	Nina Hole	Edith Garcia: 'Contemporary Monsters'		
3-4pm	Regina Heinz & Jean Nicolas Gérard	Don Reitz: 'The Great Journey' (Casson lecture)	Hyeyoung Cho: Transitions in contemporary Korean ceramics		
4:30 - 5:30pm	Sandy Brown & Shozo Michikawa	Timothy Wilson: 'Cipriano Piccolpasso's Three Books of the Potters Art'	Daniel Allen: : 'Role Play: working in self-portraiture'		
6-7pm		Henry Sandon: 'Living with Pots'			



Programme of Events for the Weekend

Sunday 5th July

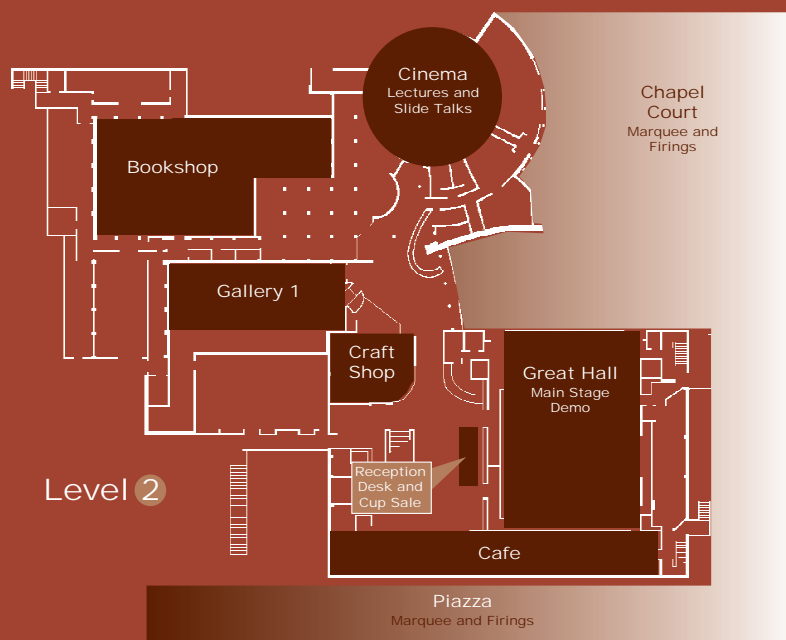
TIME	GREAT HALL	THEATRE	CINEMA	PIAZZA	CHAPEL COURT
9-9:45am	Jeff Shapiro & Shozo Michikawa		Regina Heinz: 'Ceramic Sculpture in a Contemporary Context'	Peter Hayes: Continuous raku kiln firings Hands on project: With Peter Hayes Masakazu: Kusakabe unpacking of smokeless kiln and sale of raffle bowls.	Nina Hole & Tom Barnett
10-10:45am	Edith Garcia & Jean Nicolas Gérard	Jack Doherty: 'Pots from a new place'	Simon Carroll 'Bedruthen Steps' Vicky Eden 'Cockle Pickers' David Cushway 'Teapot' and 'Jug'		
11 - 11:45pm	Sandy Brown & Regina Heinz	Shozo Michikawa: 'Nature into Art'	'TaoYao' Pottery and Dragon Kiln Village (2008 UNESCO Clay Art Winner)		
12 noon	RAFFLE	RAFFLE	RAFFLE		
12:15-1pm	Zhao Hua Yang, Zhao Hua Long and Ning Fa You	Jean Nicolas Gérard: From Brazzaville to Valensole, and other trips into ceramics	The Fu Le International Ceramic Art Museums Forum		
1:15-2pm	Jack Doherty & Daniel Allen	The Log Book: 'International Wood-fired Ceramics - A Personal Perspective'	Aberystwyth Arts Centre Ceramics Residency: Evelyn Grant		
2:15- 3pm	Don Reitz	Masakazu Kusakabe 'Dancing woodfire kiln and smokeless wood fire kiln'			
3:30-4:30pm	Closing Ceremony				

Please wear your Festival pass at all times. This pass is your entry ticket to the demonstrators' arena, lecture theatres, guest workspaces, videos and seminars - no pass, no entry! If you lose your pass at any stage over the weekend please go to the main reception desk.

Please note: these times are provisional and may vary as work progresses throughout the weekend. Any alterations will be announced on the main stage and posted on the Front Desk notice board.

Many of the weekend's events take place simultaneously and visitors are free to circulate and visit whichever area they find most interesting. When not on stage demonstrators will be working in either their marquee on the Piazza, or in the Robing Room next to the Great Hall. Please feel free to go and talk to them. This arrangement provides an opportunity for informal discussion and exchange of ideas. Our aim for the weekend is to be as relaxed as possible and for the demonstrators to be accessible.

Floor Plans



Many of the weekend's events take place simultaneously and visitors are free to circulate and visit whichever area they find most interesting. When not on stage demonstrators will be working in their allocated space. Please feel free to go and talk to them. This arrangement provides an opportunity for informal discussion and exchange of ideas with them. Our aim for the weekend is to be as relaxed as possible and for the demonstrators to be accessible.



Level 1
Ceramics Galley, Chapel and access to other floors.

Disabled Access for the Festival:

There will be designated disabled parking bays close to the entrance of the Arts Centre. Hearing loops are installed in the Great Hall, Theatre and Cinema.

All areas of the Festival are accessible to wheelchair users with the exception of the Chapel Court where the trade stands and firings take place, however these can be viewed from the top level of the Arts Centre instead. Please could anyone needing wheelchair access contact Sophie Bennett Tel: 01970 622338 Email: sob@aber.ac.uk in advance.

If you have any questions or problems as the weekend progresses come to the main registration desk for assistance.



Henry Sandon

Master of Ceremonies

Jim Robison

Jim will once again be the Master of Ceremonies this year - he has been involved with the Aberystwyth International Ceramics Festivals since 1993! Born and educated in the USA, he moved to Yorkshire in 1972 where he established Booth House Gallery & Studio.

Jim's work is usually slab built and slip decorated, including large-scale sculpture and architectural ceramics. He enjoys an experimental approach to making, often combining personal construction techniques with unusual surface textures, multiple layers of clay and colourful glazes. All pieces are reduction fired in a gas kiln. Jim is an elected Fellow of the British Craft Potters Association and former Chair of the Northern Potters Association.

Ingrid Murphy

Ingrid Murphy is the Director of the BA Hons. Ceramics Course at Cardiff School of Art & Design, UWIC. Also a practising ceramic artist, Ingrid's work is widely exhibited and recently she undertook a residency at the FuLe International Ceramic Museum in China as part of the British delegation to create a body of work for the British Pavilion.

Ingrid has diverse experience in both ceramic education and practice nationally and internationally. Ingrid is also involved in the development of the La Perdrix Ceramic Centre in the Dordogne, France, where she both researches and runs courses for students.



Jim and Ingrid with Genya Sonobe, Festival 2007

President

Henry Sandon

Henry Sandon has been interested in ceramics for many years, ever since finding Roman and Medieval pots in his garden. He was fortunate in having tuition from the great potter Geoffrey Whiting and although the pupil could never make a pot to satisfy the master, he was taught to appreciate the skill that goes into the making of a fine pot.

After 17 years as Curator of Royal Worcester at the Dyson Perrins Museum and many archaeological excavations on porcelain in pottery sites he became one of the resident experts on the BBC Antiques Roadshow. He has turned on many people to a love of ceramics and is honoured to attend his third International Ceramics Festival as President.

In 2008 he was made an MBE in the birthday honours, one of the reasons being for services to the ceramics industry; he will be in his element surrounded by pots and potters at Aberystwyth.



From left to right
Daniel Allen
Tom Barnett

Demonstrators and Guest Artists 2009

Daniel Allen

Born in Sheffield, UK, Daniel Allen trained at Cardiff and was key in setting up the ceramics co-operative Fireworks Studio, where he is still based. His figurative ceramics range widely in scale and in their surface treatment, but all take direct references from the artist's life and the world around him, and he often introduces an element of black humour.

He will be demonstrating his work on a large scale hollow standing figure, built up with small sheets of flattened paperclay without the use of armatures.

'The ceramic figures are my replacement, they allow me to perform and I have perhaps now a more captive audience than I could ever have wished for had I ended up following my true passion and working in theatre. The gallery is my stage.'



Tom Barnett

Tom Barnett will be presenting an exhilarating 'performance kiln artwork' created especially for the Festival:

'[fire]Capsule is a process-led artwork conceived to overload the senses. At its core is the intense spectacle of an architectural capsule-like sculpture being fired as a kiln and unveiled at

1200°C. This is constructed, fired, and eventually displayed on site. The hollow clay form, 7ft high and pierced by a door, will be wrapped in insulation fabric and fired with wood as a 24 hour event. Crucially this time period will be accompanied by highly evocative sound art together with symbolic imagery for public consumption. At the dramatic conclusion to this event the insulation material will be removed to reveal an amazing spectacle - the Capsule for a few moments glowing in searing orange white splendour - to then lose its life and cool.'



Sandy Brown

Sandy Brown is 'one of the great individualists of British ceramics...Her vocation in ceramics (is) her ability to release ideas through clay and glaze.' (David Whiting)

Sandy Brown studied Daisei Pottery at Mashiko Japan and this rigorous training, along with some ritualised aspects of life such as the tea ceremony which she experienced there, strongly influenced her development. However her intensely personal and original style - at once insightful, exuberant, vivid - shows a rich mix of influences from contemporary visual culture, assimilated over a lifetime refining her techniques and her approach to creating. Making both functional objects and sculptures, she is not afraid of creating on a large scale - her installation 'The Still Point & the Dance' can be seen in Gallery 1 during the Festival (see page 3)

For her demonstration, Sandy plans to work on both large and small scale pieces, and will demonstrate her technique of 'letting go' glazing.



Edith Garcia

Demonstrators and Guest Artists 2009



Jack Doherty

Jack Doherty was born and brought up in Ireland, and trained at the University of Ulster in Belfast. Jack was recently appointed to the position of Lead Potter at the Leach Pottery in St. Ives, Cornwall, and is an energetic and key figure in British ceramics .

'I have worked with porcelain for many years and I enjoy the very different qualities of this versatile material. During the Festival I will be making thrown and slab pieces. The thrown pots will show the more refined nature of the clay. I will be using throwing ribs to stretch and shape the forms and a variety of improvised tools to mark the surfaces while the clay is still soft. With these pieces I am trying to produce a balance between form and decoration, always trying to preserve the energy and freshness of the making. The slab plates and dishes are made in a more robust way, essentially using the same tools and marks but drawing deeply into the heavy clay slabs. I hope that these pots will have a monumental quality while still remaining functional.'



Edith Garcia

Edith Garcia was born in Mexico, and has lived in both the USA and UK. Many of her ceramic sculptures and installations display a fragmentation of the human form, producing works which externalise a - sometimes disturbing - psychology, overlaying a child's emotional viewpoint with an adult perspective. An artist who primarily uses ceramics, Garcia

incorporates other materials where necessary. She is currently researcher at the Royal College of Art in London.

'There are many forms in which an artist works; for me my work is a way to record my unique individual experiences throughout my lifetime, depicting everyday occurrences and past experiences, addressing contemporaneous issues specific to the human condition. As my life continues to change so will the content behind my artwork.'



Jean Nicolas Gérard

Born in the Republic of the Congo, Jean Nicolas Gérard moved at the age of seven to France, where he has lived and worked since. He studied with Jean Biagini in Aix en Provence, and was familiar with Japanese techniques as well as American raku, but found his path when he discovered the delights of terre vernissée or slipware at Claire Bogino's studio.

'... terre vernissée is a traditional technique. I love its ability to bring joy into everyday life, on the kitchen table as well as in the garden...But I am also questioning this tradition. Today, terre vernissée is a living technique, bringing me emotions as intense as those that I get from contemporary painting or Asian ceramics which nurture me.'

Jean Nicolas will be demonstrating how he makes pots in series, both thrown and slab built; and also his methods of decoration.



From left to right
Regina Heinz
Nina Hole

Demonstrators and Guest Artists 2009

Peter Hayes



'.... One of the major introductions I had to ceramics was digging Neolithic iron age and Roman Samian shards on archaeological digs somewhere in Wales while trying to survive as an art student in Birmingham. I am naturally drawn to shapes of artefacts and objects from other cultures and other times, but that remain timeless. Erosion and change through time and nature are recorded in a piece. My main aim in my work is not to compete with nature; but for the work to evolve within the environment. The minerals, like iron and copper; that I introduce into the 'Raku' ceramic surface have their own effect on the clay during the time they are submerged in the river or the sea... Each individual piece takes on its own developing surface; its own history and its own aesthetic. I am merely the maker.'

Peter Hayes began his career in Cornwall, spent a decade in Africa, and has studied traditional techniques alongside craftspeople in Korea, Japan and India. At the Festival, he will be demonstrating how to build a high quality affordable Raku kiln, as well as offering hands on opportunities!



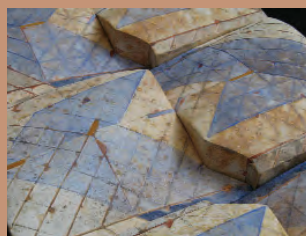
This demonstration is sponsored by Top Pot Supplies

Regina Heinz

Regina Heinz is best known for the 'pillow' forms she creates as individual abstract sculptures or as part of a wall panel series. Inspired by the mountainous landscape of her home country, Austria, and constructed from soft slabs of clay, Regina Heinz's pieces display an organic and sensual quality. Reminiscent both of the intimacy of a body and the flowing lines of a landscape, her work, equally, can be seen as purely abstract - dealing with form, volume, line and colour. Precisely constructed forms echo geometric designs, which are painted on in vibrant colours and contrast with the soft clay surfaces.

"It is this tension between hard and soft, the architectural and the organic, the abstract and the natural, which animates my work."

Regina's demonstration will reveal her special slab building technique, which emphasises the softness and tactile qualities of clay.



Nina Hole

Hole is one of Denmark's leading ceramic artists who builds large scale clay sculptures which act as their own kiln. At Aberystwyth, Nina Hole will be building a 2 metre high sculpture, ready for firing at the Festival weekend.

"I have developed the concept of constructing large outdoor sculpture that contains all the elements of kiln, structure, form, firing and performance ,built and fired in situ.

The sculpture is built on a base of firebricks which are placed so that they also serve as firing channels; the kiln itself comes into existence when the finished sculpture is wrapped up in a ceramic fibre blanket and then fired.

Each fired sculpture is different due to the unknown, such as the elements, materials and the organizations involved.

For me the peak moment is when we let the curtain of ceramic fibre fall and the sculpture is reveal in its glowing state... "





Shozo Michikawa

Demonstrators and Guest Artists 2009



Masakazu Kusakabe

Masakazu Kusakabe is a renowned potter and kiln builder. He has been investigating methods of firing since the 1970s and at the Festival he will be demonstrating the making and firing of his 'smokeless kiln'.
'The smokeless kiln derives from an effort to achieve fast firings, with strong fire and ash effects on pots, while emitting almost no smoke at high fire temperatures. For me the kiln is a part of the universe. Inside is the big bang where bright firelight, galaxies, and stars (my pieces) are born. Firing is like the explosion of a volcano, and my pieces are like its lava rock. Pottery is like alchemy, we can create many jewels with clay, flames, and ash. I am the servant of a fire god.'

Shozo Michikawa

Shozo Michikawa's works have been called haikus in clay :

'... my partner is nature itself and I need to get along well with it otherwise the result will be unsatisfactory. All I do in the process is to give a little helping hand to the ever transforming clay to assist the way it wants to go.'

Born in Hokkaido, north Japan, in 1953, Shozo Michikawa is one of Japan's leading ceramicists and has exhibited worldwide. He studied at Aoyama Gakuin University from where he graduated in 1975, and now lives and works in Seto, Aichi. He will be demonstrating his throwing techniques, particularly in making triangular and square forms.



Don Reitz

Don Reitz was born in 1929 in Pennsylvania and is recognised as one of the most important and influential ceramicists working today. He has pursued a life-long investigation of both salt and wood firing, and through long experimentation developed a range of colours and surface effects previously unknown in salt-firing. Among many awards, in 2002 he received one of the highest honours in his field when the American Craft Council awarded him their Gold Medal.

'Over the years, time has allowed me to manipulate my forms and surfaces with some degree of innate intelligence and personal satisfaction. Time, an essential ingredient in firing, hardens and colors the clay, but also gives me time to think and look inward. Time has enabled me to bring to my work a personal uniqueness, a clarification of purpose. These works serve as a bridge which allows me to move freely from one reality to another. In the

interface I am free of convention, opinion, and burdensome history. My work becomes a personal iconography enabling me to visualize and organize my information. My marks are there in the clay. My signature.'

Don Reitz will also be giving the Festival's Michael Casson Memorial Lecture - see the programme pages for the timing.



Zhao Hua Yang, Zhao Hua Long, Ning Fa You

Demonstrators and Guest Artists 2009

Jeff Shapiro

'I am at a point in my personal time line that crosses back and forth between the realm of utilitarian function and sculpture.'

Jeff Shapiro moved from the USA to Japan for 9 years, where he experienced a formal wood-fire potter's apprenticeship, then moved back to the USA where he still lives and works. He will be demonstrating his methods of slab construction using templates, working on large pieces including a five foot tall triangular bottle. He will also show how he makes thick platters from recycled clay, and hand carves tea bowls.

'I want to challenge and be challenged, inspire and be inspired, move when I feel moved, feel the passion to create as a response to what I see, hear, touch, smell and taste...'



Zhao Hua Yang, Zhao Hua Long, Ning Fa You

Zhao Hua Yang, the owner of the Jingdezhen Hua Peng Ceramics Factory, located in Jingdezhen, China, has been making 'Big Pots' for over twenty years. More than ten years ago, Zhao was joined by his brother, Zhao Hua Long, and assistant, Ning Fa You, in the creation of these astonishing large objects - a section of one of these pots can measure 2

metres in diameter and weigh 800 kg after firing!

During the Festival, these three Chinese craftsmen will be demonstrating the techniques and traditions of craftsmen in Jingdezhen. They will be using tools, techniques and materials brought with them from China, including an archaic wheel, to demonstrate how they throw, trim and make.



POTTERYCRAFTS

"The UK's leading manufacturer of kilns and moulds"

LIMITED
Briar Wheels



Located in the heart of "The Potteries", PotteryCrafts have the experience and skill to not only create world-class kilns and moulds, but also provide five star after-sales service. Technical advice, replacement parts, servicing or repair - we do it all!



WWW.POTTERYCRAFTS.CO.UK

WWW.BRIARWHEELS.CO.UK

WWW.ALLABOUTCRAFTS.CO.UK

Head Office
Tel: +44 (0)1782 745000
enquiries@potterycrafts.co.uk

Rickmansworth
Tel: +44 (0)1923 800006
rickmansworth@potterycrafts.co.uk

Briar Wheels & Supplies
Tel: +44 (0)1425 652991
sales@briarwheels.co.uk

DEBORAH BAYNES

Pottery Courses

Every Summer since 1971

The longest running residential course
in the U.K.

Serious fun for potaholics

* Intensive throwing weekends.

* Small groups- individual attention.

* Beginners and experienced potters welcome.

* Studio open 24 hours per day,
ideal for early risers and insomniacs.

* Full weeks to throw, hand build, Raku, smoke fire.

* Two weeks by arrangement to Salt Glaze.

* Excellent food, wine, company and accommodation
in our 16th century hall by the Orwell estuary.

Find out what you are missing, visit:-
WWW.POTTERYCOURSES.NET

Or send for brochure from :-

Deborah Baynes,

Nether Hall, Shotley, Ipswich, Suffolk, IP9 1PW.

Tel: 01473 788300 | Fax 01473 787055.

CASTREE KILNS

www.castreekilns.co.uk



TEL 01994 241589

Quarry Farm, Llanboidy, Whitland, Carmarthenshire, SA34 0EX

www.chinaclayart.com

Visit China and the Ceramic Workshops of Sanbao



Stop at the Sanbao Stand
and talk to
Christine-ann or Wenying

Ask about our Residency Programs



Take the road less travelled

in our

Pre-arranged and Custom craft oriented tours

Ask about our tours -- Build you group tour now



Featured at the Festival

and available to purchase

Jiangshang Li's 2008 UNESCO Clay Art Award winning film
"Tao Yao -Pottery & Dragon Kiln Village"

Available at the Festival :

Chinese brushes
Tools
decals
colours
textiles and more

Also for Shipment:

clays and kiln shelves



Tours:

Christine-Ann Richards
Chapel House, High Street, Wanstraw
Somerset BA4 4TE, UK
Tel: +44(0) 1749850208
mail@chirstineannrichards.co.uk
www.chirstineannrichards.co.uk

Residencies and Clay Materials :

Li Wenying, Programme Director
Sanbao Ceramic Art Institute
Jingdezhen
PO Box 1000
PR China 333001
Tel: +86 (0) 798 8483665
wenying2002@hotmail.com

 <p>ITC Ceramic Coatings</p> <p>Kiln Elements</p>	<p>Roderveld Slab Roller Jumbo Junior</p>  <p>The Jumbo Junior can be used on a table and is easily stowed away when not in use. It is ideal for use in the smaller studio.</p> <p>Full range of equipment available</p>	<p>Raku Glazes</p> 	<p>MUDTOOLS Innovative clay tools by Michael Sherrin</p>  <p>Our exciting new range of Mudtools are now available</p>
<p>SHIMPO RK-3E Whisper Wheel</p>  <p>Full range of potters wheels available</p>	<p>EARTHSTONE CLAYS</p> 	<p>SCARVA Pottery Supplies</p> <p>Please call for a copy of our catalogue</p> <p>Tel: 028 40669699 scarvapottery.com</p>	<p>Wax Crayons Earthenware & Stoneware</p> 
<p>Stoneware Glazes</p> 	<p>All stainless steel low cost hand extruder - super robust ideal for schools and studios.</p> <p>venco Hand Extruder</p> 	<p>Full range of books & tools available</p> 	<p>SHIMPO De-Airing Pugmills</p> 

University of the Arts London
Camberwell



ceramics

BA (HONS)

CAMBERWELL COLLEGE OF ARTS

Part of the University of the Arts of London
One of the world's foremost art and design institutions

For open day information or Prospectus call 020 7514 6302
or email: enquiries@camberwell.arts.ac.uk

Peckham Road, London SE5 8ZY
www.camberwell.arts.ac.uk

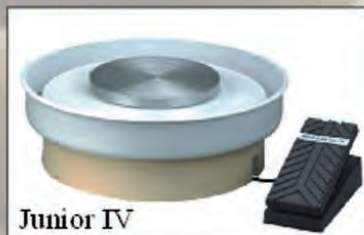
Linda Barker

CLAYS, KILNS, GLAZE, MATERIALS, WHEELS, EQUIPMENT, TOOLS, STAINS, BOOKS, DVD

TOP POT SUPPLIES



Maxi Clay Gun



Junior IV

**Visit our online shop for special offers, new products,
news and opportunities. Buy online 24/7
www.toppotsupplies.co.uk**

Celadon Hse, 8 Plough Lane, Newport, Shropshire, TF10 8BS

Tel: 01952 813203 Fax: 01952 810703

email: robin@toppotsupplies

CLAYS, KILNS, GLAZE, MATERIALS, WHEELS, EQUIPMENT, TOOLS, STAINS, BOOKS, DVD



**The website for up-to-date
information on contemporary
studio ceramics**

- Get in depth knowledge and pictures of ceramicists and their work
- Check out information on exhibitions, fairs and other events on now and over the next year
- Look up galleries and see whose work they stock
- Discover new work and when and where to see it
- Buy work from galleries and potters on the site.

info@studiopottery.co.uk

www.studiopottery.co.uk

Studiopottery.co.uk Ltd, P.O. Box 834, Haywards Heath, RH16 1WT, U.K.

G Gladstone Engineering Co Ltd

UK manufacturers of a complete range of Pottery Equipment

G34 Bailey Wheel

The Gladstone Bailey wheel offers the studio and professional potter a wheel of unparalleled performance and versatility in a compact and user friendly design. The Bailey wheel has been designed to complement a European style of throwing with the wheel head set at a greater height than most wheels of this style allowing a more comfortable throwing position. The wheel is powered by a super smooth 1/2hp drive that is controlled by a computer enhanced VF drive that due to its unique design can generate up to the peak equivalent of 11hp under heavy loads this enables the wheel to give constant smooth power through out the speed range and is extremely quiet in operation.



Shown with optional seat and shelf

The Gladstone Bailey wheel is one of many different machines we manufacture, wheels, pugmills, extruders, jigger jolleys, wet back spraybooths to name a few, we have been making pottery equipment for over 30 years, we are UK based and the largest manufacture of pottery machinery in the UK and all our machines carry a 12 month warranty.

**Foxley Lane, Milton, Stoke-On-Trent, Staffs, ST2 7EH
Telephone 01782 536615, Fax 01782 533415
E-mail:- info@pugmills.com
Web:- www.gladstone-engineering.com**

Not Just Clay...

**Proud Sponsors
of Aberystwyth
Ceramics Festival 2009**

*We look forward to welcoming
you at our stand!*

Everything for the craft potter

POTCLAYS

LIMITED

Potclays has manufactured its professional clays since the 1930's, and with this level of experience it is no surprise that these are often the preferred choice of world renowned potters. Our production team take pride in their craft, working with long-established recipes to produce the highest quality sliphoused and panmilled clays associated with our name. We now have the widest range of clay bodies on the market and provide specialist technical advice should you require it. **But did you know that Potclays also stock a huge range of glazes, colours, tools and equipment, potters wheels, machinery, and our own range of top and frontloading kilns which are built on-site?**

Our **exclusive distributorships** include **L&L kilns** (Mainland UK); **Shimpo RK10 & Whisper Potters Wheels** (UK and Eire); **Southern Ice Porcelain** (Europe - except France).

Please call or email us for further information.

Potclays Ltd Brickkiln Lane Etruria Stoke-on-Trent ST4 7BP
T:01782 219816 F:01782 286506 E:sales@potclays.co.uk

International Ceramics Festival Gŵyl Rhyngwladol Serameg

Aberystwyth Arts Centre, Aberystwyth University, Aberystwyth
Ceredigion, SY23 3DE WALES

Tel +44 (0) 1970 623232 Fax +44 (0) 1970 622883

Email sob@aber.ac.uk

www.internationalceramicsfestival.org



Valentine Clays



POTCLAYS
LIMITED



Gladstone Engineering

TOP POT SUPPLIES

SCARVA
Pottery Supplies

CALOR



Canolfan y Celfyddydau
Aberystwyth Arts Centre



Noddir gan
Lywodraeth Cynulliad Cymru
Sponsored by
Welsh Assembly Government

